



Short history of using Yyteri beach

Seppo Salonen
Head of Unit
Planning and Development
Environment and Permit Services
City of Pori
17.4.2018

City of Pori

- Founded 1558
- 85 000 inhabitants (10th in Finland)
- old industrial city
- Total surface area 2062 sq. km
 - land 1156
 - freshwater 62
 - sea 844



Yyteri Dunes

- Geologically very young area, recent dune area approx. 300 years old (land uplift)
- Sandy area 3 km long, fine sand, great place for swimming/sunbathing
- Railroad was built 1901 nearby, which made the dune area more accessible
→ recreational use started to grow
- Nationally important tourist attraction since 1930's (first restaurant 1933, regular bus traffic 1934)



After II World War intensity of recreational use grew



Problems are arising

- The use of the Yyteri dunes area gradually intensified → more damages
- The dune area was not considered as an important natural formation before 1990's (Natura 2000)
- Still long after Natura status, protection actions were not made in a large scale



The end of mass events in Yyteri

- Mass events in Yyteri
 - Problems: traffic, noise, waste, effects on dune habitats
- Beach football tournament:
 - 2004: 12 teams
 - 2007: 170 teams
 - 2010: 906 teams
- 2011: total disaster
 - Due the good weather event was overcrowded, dune protection did not work, waste and parking problems etcetc.

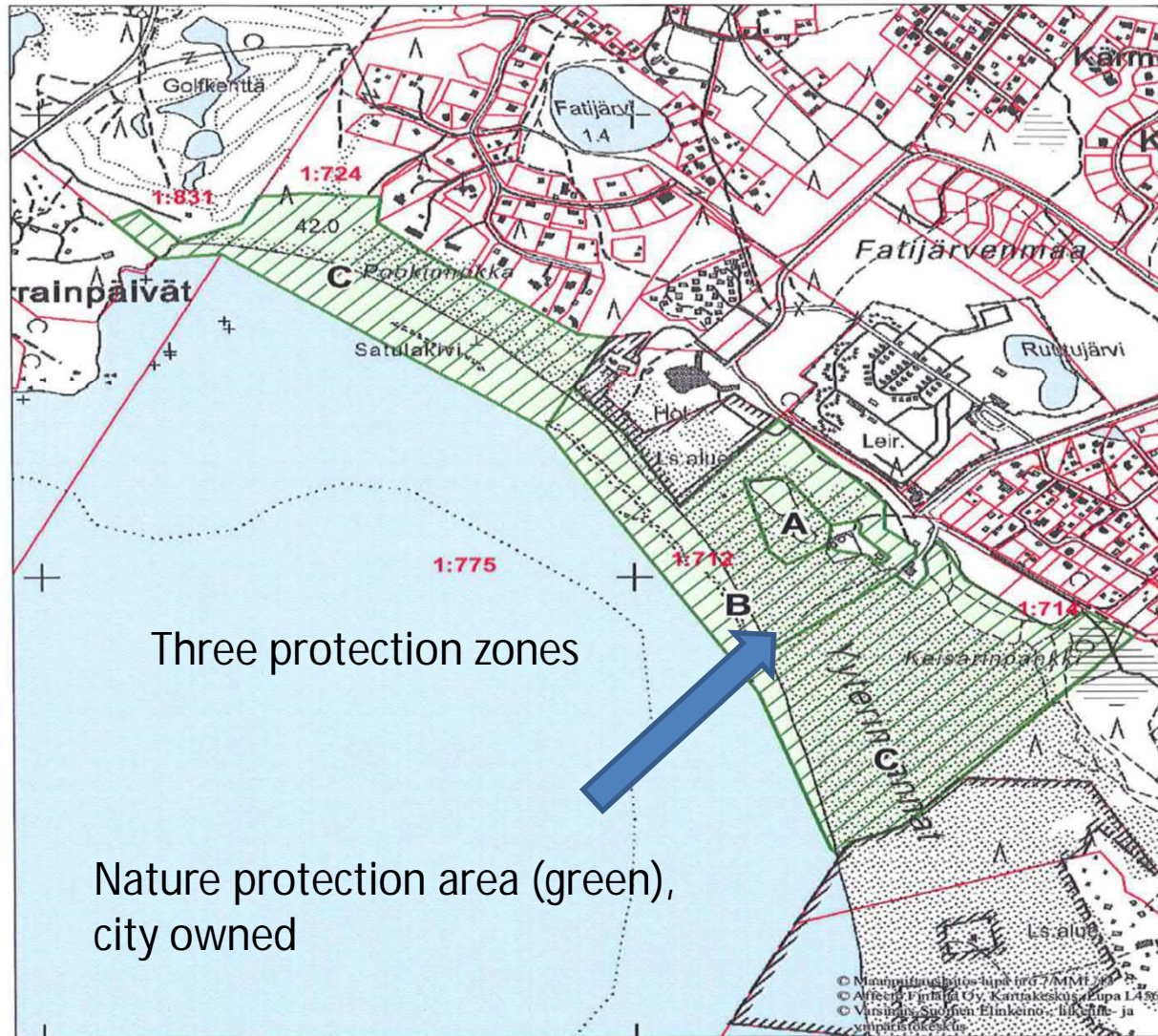


Protection actions were needed

- Although not very much known, Yyteri is ALSO part of Natura 2000 network, not only for swimming
- Special nature protection area was established 2013, protection rules
- City of Pori owns recreationally most crucial part of the dune area
- Total area of the protected area (city owned) is 66 ha , land area is 40 ha
- Detailed city plan 2016 based on protection rules



LUONNONSUOJELUALUE, KARTTA 1/2



Three protection zones

Nature protection area (green),
city owned

Tämä kartta liittyy Varsinais-Suomen Elinkeino-, liikenne- ja ympäristökeskuksen tänään antamaan päätökseen

Dnro VARELY/1131/07.01/2012

Turussa, 19.2.2013
Ylitarkastaja Olli Mattila

Mittakaava 1:10000



Koordinaatisto: yhtenäiskoordinaatisto
Varsinais-Suomen ELY-keskus
HUOM! Kartan tausta-aineistot ja kiinteistörajat ohjeellisia



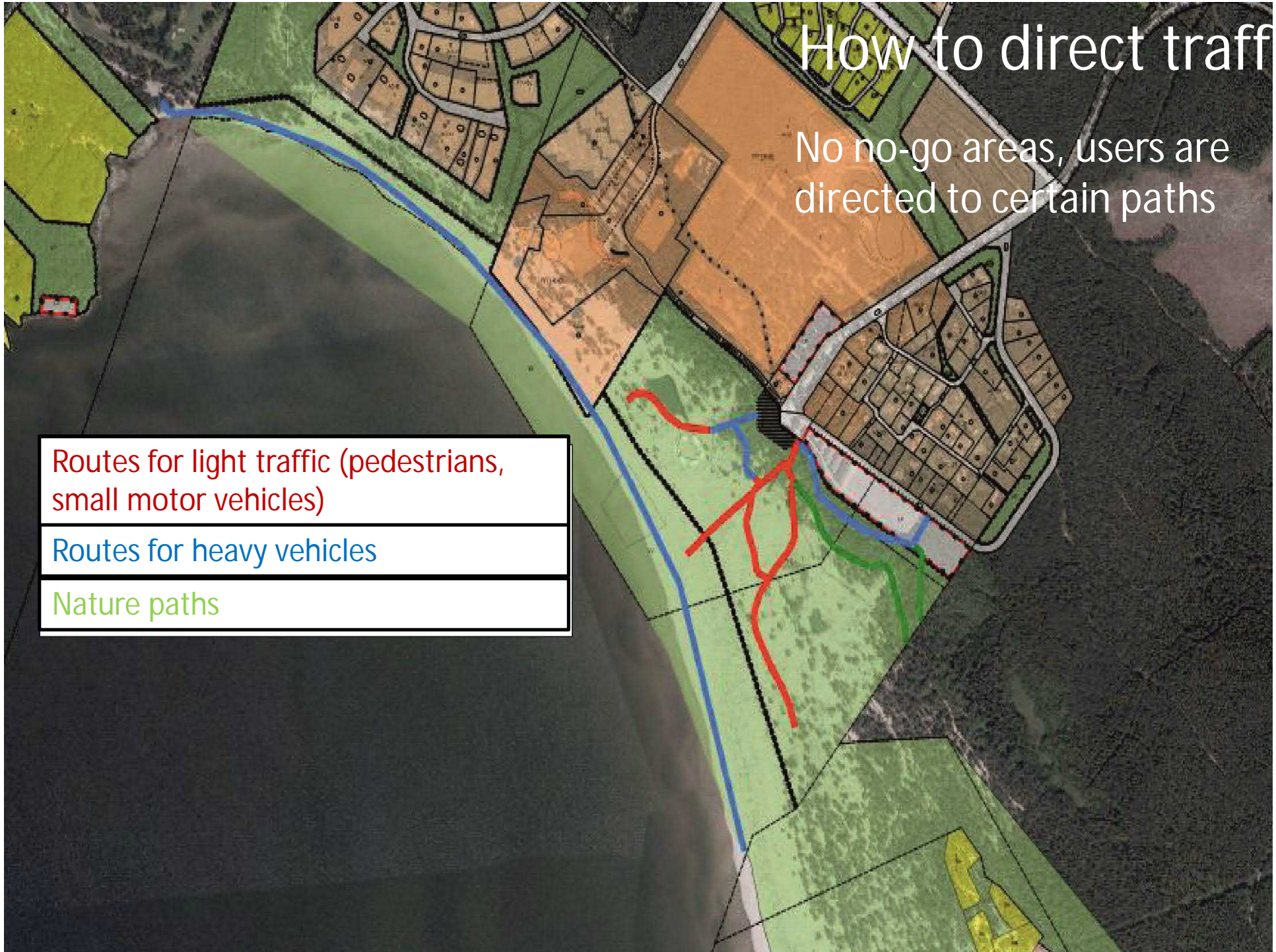
How to direct traffic

No no-go areas, users are directed to certain paths

Routes for light traffic (pedestrians, small motor vehicles)

Routes for heavy vehicles

Nature paths



Conservation problems



What is still allowed?



If they are in accordance with the protection rules = do not make irreversible damage to protected ecotypes

How to know what activities suit to the dune area?

- Aim: to integrate nature protection and recreational use in a exemplary way
- Before: all activities had to accepted by state authorities, events that did not have any permits
- In future:
 - 1) events suiting every man's right: announcement to city authorities
 - 2) small events that can suit protection rules: city officials consider & announcement to state authorities
 - 3) big events that can suit protection rules: as previous, but Natura assessment possible
 - 4) big events that do not suit protection rules: permit from state authorities to deviate from protection rules
 - guidance co-operation with organizers



Recent work and planning

- City of Pori has recently started to concentrate on Yyteri area more (Yyteri strategy work, funding)
 - new sewage line (almost done)
 - removable toilets/showers
 - benches, signs, letters
 - removable playground equipments
 - extension of parking space outside protection area
 - marketing
 - new paths connecting 1) hotel and golf course, 2) main parking lot and Adventure Park Huikee
 - co-creation with users?
- pier?
 - Natura 2000 assessment has been made for max 400 m pier
 - purposed mostly for promenading
 - costs, permits?



Thank you!
Let's co-
operate!

